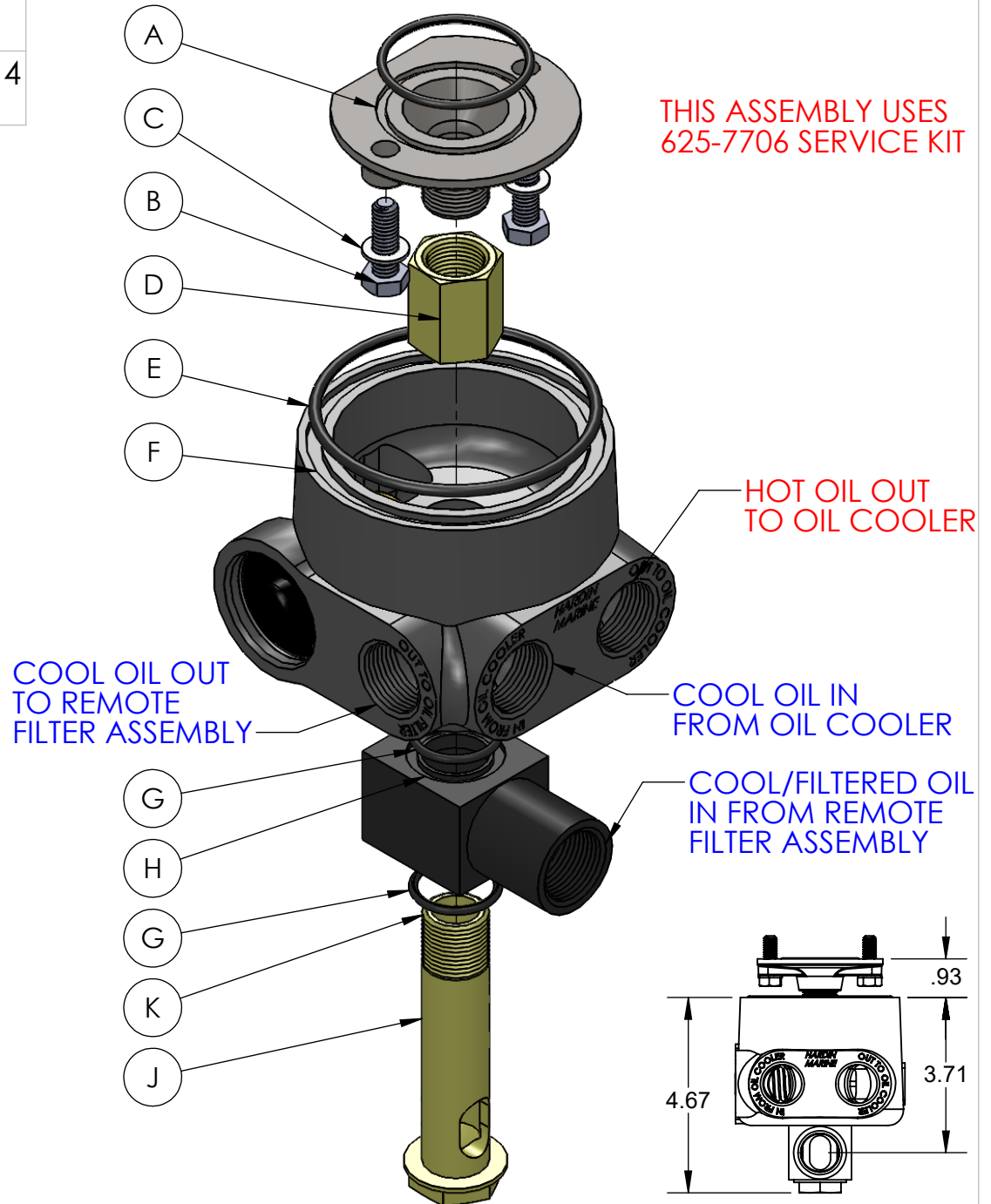


TITLE: THERMOSTATIC OIL FILTER ADAPTER - MARK 4
INSTALLATION

INSTALLATION INSTRUCTIONS:

- 1) INSTALL THE PROVIDED O-RING WITH A LIGHT COAT OF GREASE INTO THE RECEIVER GROOVE OF THE BYPASS ELIMINATOR MOUNT , FIG. A.
- 2) APPLY BLUE LOCTITE TO THE (2) 5/16 BOLTS, FIG. B AND INSTALL THE PROVIDED 5/16 WASHERS, FIG. C, TO THE MOUNTING BOLTS.
- 3) NEXT MOUNT THE BYPASS ELIMINATOR TO THE ENGINE BLOCK AND TORQUE TO 15-20 FT. LBS..
- 4) NEXT APPLY BLUE LOCTITE TO THE FEMALE THREADS OF THE CONNECTOR NIPPLE, FIG. D AND THREAD ON TO THE PREVIOUSLY INSTALLED BYPASS ADAPTER.
- 5) APPLY GREASE TO THE O-RING, FIG E AND PLACE IN RECESSED GROOVE IN CAST ALUMINUM OIL ADAPTOR FIG F.
- 6) APPLY GREASE TO BOTH ORINGS, FIG G. INSTALL INTO THE GROOVE ON BOTH SIDES OF THE OIL INLET, FIG H.
- 7) SLIDE OIL INLET OVER THE OIL INLET CONNECTING BOLT, FIG. J.
- 8) SLIDE THE OIL INLET MOUNTING BOLT & OIL INLET INTO THE CAST ALUMINUM OIL THERMOSTAT HOUSING.
- 10) APPLY BLUE LOCTITE TO THE THREADS OF THE OIL INLET MOUNTING BOLT, FIG. K.
- 11) TIGHTEN OIL INLET BOLT INTO THE CONNECTOR, FIG. D.
- 12) ROTATE OIL INLET TO POSITION THAT BEST SUITS THE OIL LINE ROUTING. TORQUE TO 35 FT. LBS..
- 13) ALL IN AND OUT PORTS ARE 3/4 NPT. SEE OIL LINE DIRECTION NOTES.

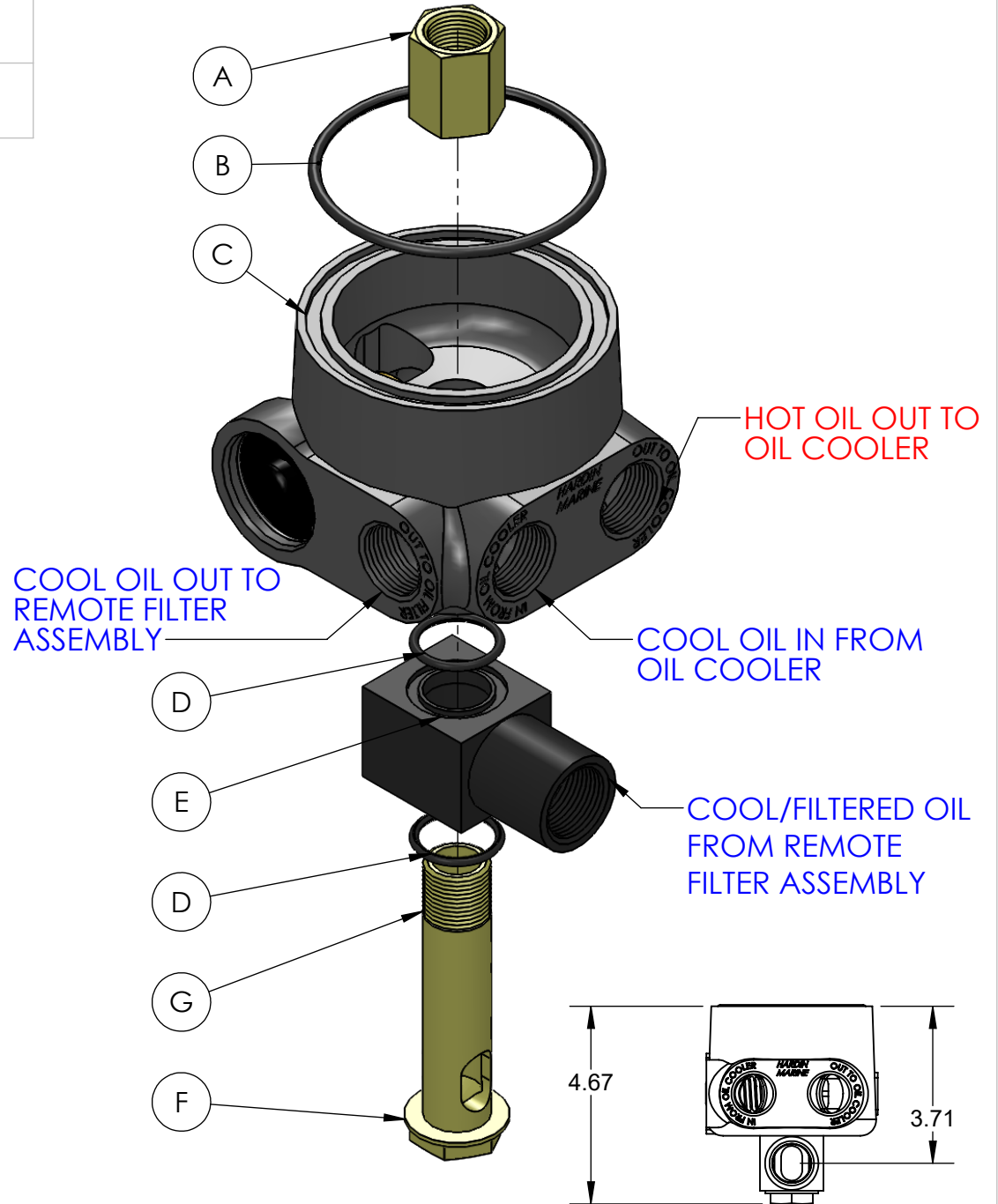


TITLE: THERMOSTATIC OIL ADAPTER -
GEN 5/6 INSTALLATION

INSTALLATION INSTRUCTIONS:

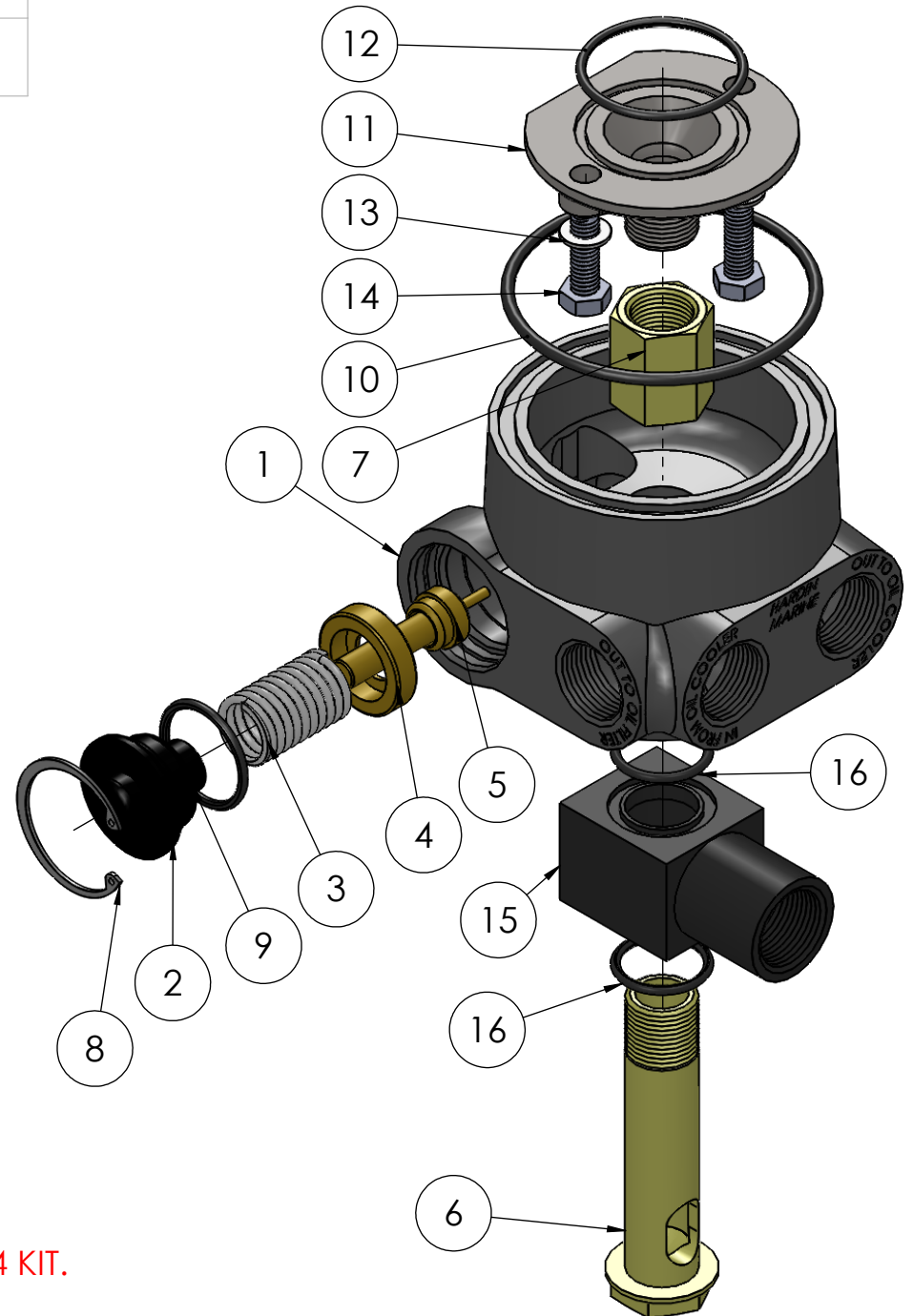
- 1) APPLY BLUE LOCTITE TO THREADS AND THREAD FIG. A CONNECTOR ON TO THE MALE FACTORY OIL FILTER NIPPLE.
- 2) APPLY GREASE O-RING, FIG.B AND PLACE IN RECESSED GROOVE IN CAST ALUMINUM OIL ADAPTOR FIG C.
- 3) APPLY GREASE TO BOTH ORINGS FIG. D. INSTALL IN BOTH SIDES OF THE OIL INLET, FIG. E.
- 4) SLIDE OIL INLET, FIG. E, OVER THE OIL INLET CONNECTING BOLT FIG. F.
- 5) SLIDE THE OIL INLET MOUNTING BOLT & OIL INLET INTO THE CAST ALUMINUM OIL THERMOSTAT HOUSING.
- 6) APPLY BLUE LOCTITE TO THE THREADS OF THE OIL INLET MOUNTING BOLT, FIG. G.
- 7) TIGHTEN OIL INLET BOLT INTO THE CONNECTOR, FIG. A.
- 8) ROTATE OIL INLET TO POSITION THAT BEST SUITS THE OIL LINE ROUTING. TORQUE TO 35 FT. LBS..
- 9) ALL IN AND OUT PORTS ARE 3/4 NPT. SEE OIL LINE DIRECTION NOTES.

THIS ASSEMBLY USES 625-7706 SERVICE KIT



TITLE:
THERMOSTATIC OIL ADAPTER-PARTS BREAKDOWN

ITEM NO.	PART NUMBER	DESCRIPTION	QTY.
1	625-7758	HOUSING, THERMOSTATIC OIL ADAPTER	1
2	625-7759	COVER, THERMOSTATIC OIL ADAPTER	1
3	625-7760	SPRING, THERMOSTATIC OIL ADAPTER	1
4	625-7761	PISTON, THERMOSTATIC OIL ADAPTER	1
5	625-7762	THERMOSTAT, OIL ADAPTER	1
6	625-7763	BOLT, THERMOSTATIC OIL ADAPTER	1
7	625-7764	CONNECTOR, THERMOSTATIC OIL ADAPTER	1
8	625-7765	SNAP RING, THERMOSTATIC OIL ADAPTER	1
9	625-1122	O-RING	1
10	625-1236	O-RING	1
11	625-7926	ADAPTER, BYPASS ELIMINATOR	1
12	625-1131	O-RING	1
13	90031AN-STSS	WASHER, 5/16 AN	2
14	90031C100HHS	BOLT, 5/16-18 x 1.00	2
15	625-7766	INLET, THERMOSTATIC OIL ADAPTER	1
16	625-1119	O-RING	2

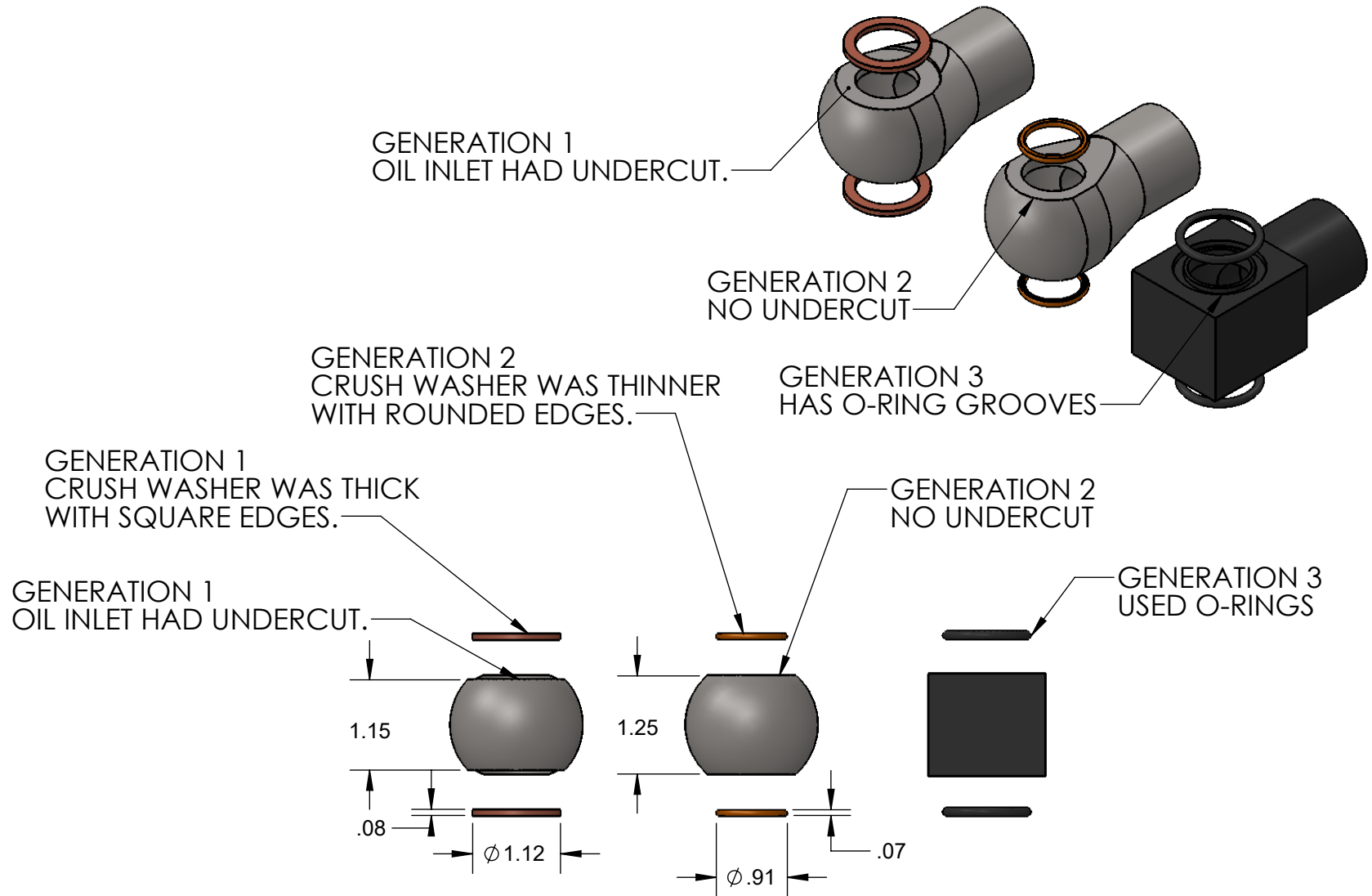


LINES 9,10, 12 & 14 COME IN 625-7706 SERVICE KIT.
LINES 12, 13, 14, 15 & 16 ONLY COME IN 625-7703 GEN 4 KIT.

HARDIN MARINE 11 Industry Dr. Palm Coast, FL 32137
386-445-2500 / FAX 386-445-1122

PART NO.
625-7704

TITLE: THERMOSTAT OIL ADAPTER - REVISION
CHANGED



GENERATION 2 CHANGE STARTED ON 02/24/16 THRU 08/08/19.
GENERATION 3 CHANGE STARTED 08/08/19

HARDIN
MARINE

11 Industry Dr. Palm Coast, FL 32137
386-445-2500 / FAX 386-445-1122

PART NO.
625-7706

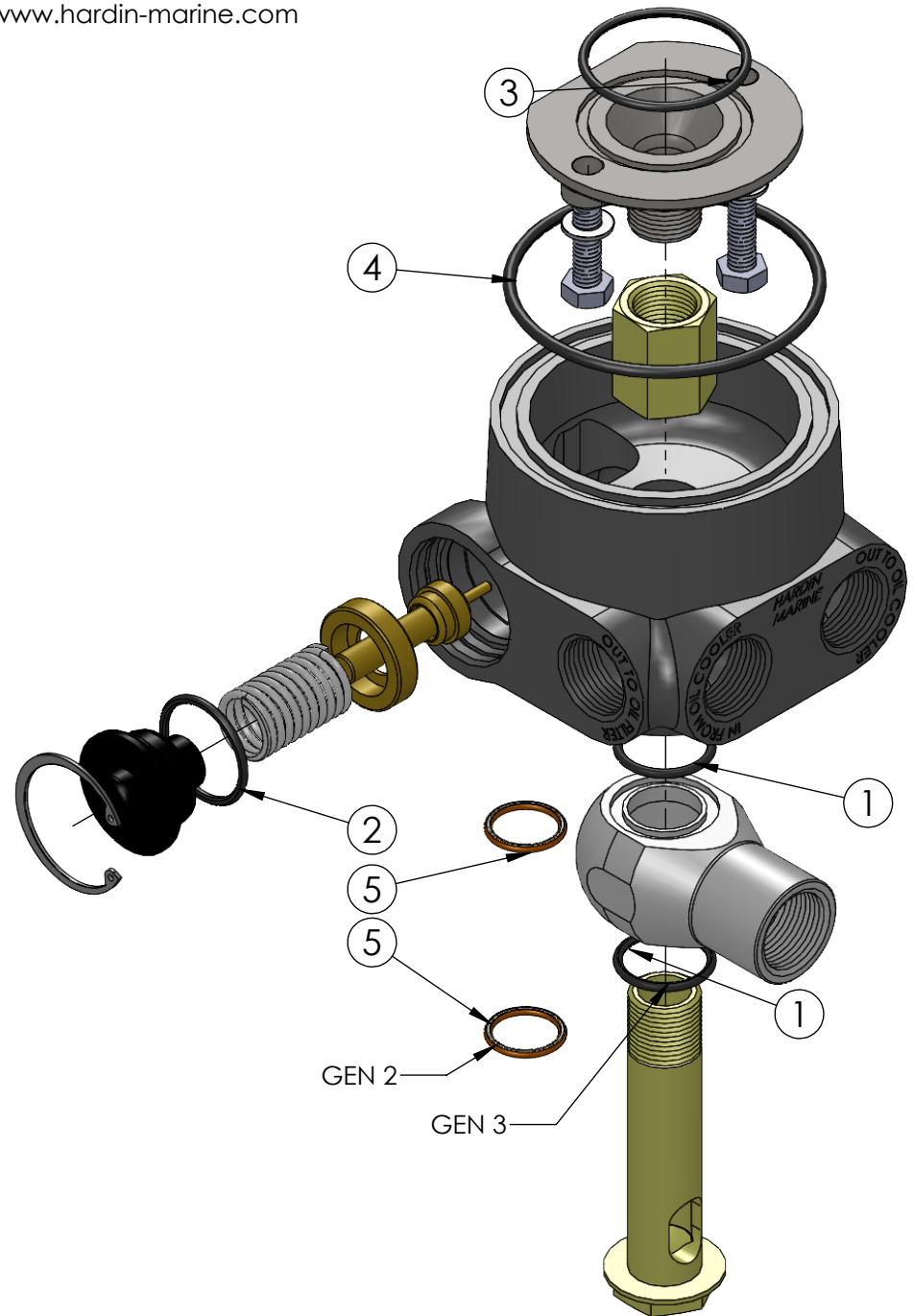
www.hardin-marine.com

TITLE:
THERMOSTATIC OIL ADAPTER SERVICE KIT

ITEM NO.	PART NUMBER	DESCRIPTION	QTY.
1	625-1119	O-RING	2
2	625-1122	O-RING	1
3	625-1131	O-RING	1
4	625-1236	O-RING	1
5	625-7768	WASHER, CRUSH-GEN 2 INLET	2

NOTE:

- 1) THIS KIT FITS GENERATION 2 AND GENERATION 3 625-7703 & 625-7704 THERMOSTATIC OIL ADAPTERS.
- 2) GENERATION 1 NEEDS TO USE 625-7707 OIL INLET ADAPTER KIT.
- 3) 625-1131 IS ONLY USED WITH GENERATION 4 ENGINE.
- 4) KIT COMES WITH THE ABOVE PARTS ONLY. IF OTHER PARTS ARE NEEDED SEE ATTACHED BREAKDOWN SHEETS.



THIS DRAWING IS CONFIDENTIAL AND IS SUPPLIED ON EXPRESS CONDITION THAT IT SHALL NOT BE LENT, COPIED OR DISCLOSED TO ANY OTHER PERSON OR USED FOR ANY OTHER PURPOSE WITHOUT WRITTEN CONSENT OF HARDIN MARINE INC.. BREACH OF THIS CONTRACT WILL HOLD AND IT'S PRINCIPALS LIABLE FOR LOSS AND DAMAGES.

HARDIN
MARINE

11 Industry Dr. Palm Coast, FL 32137
386-445-2500 / FAX 386-445-1122

PART NO.

625-7707

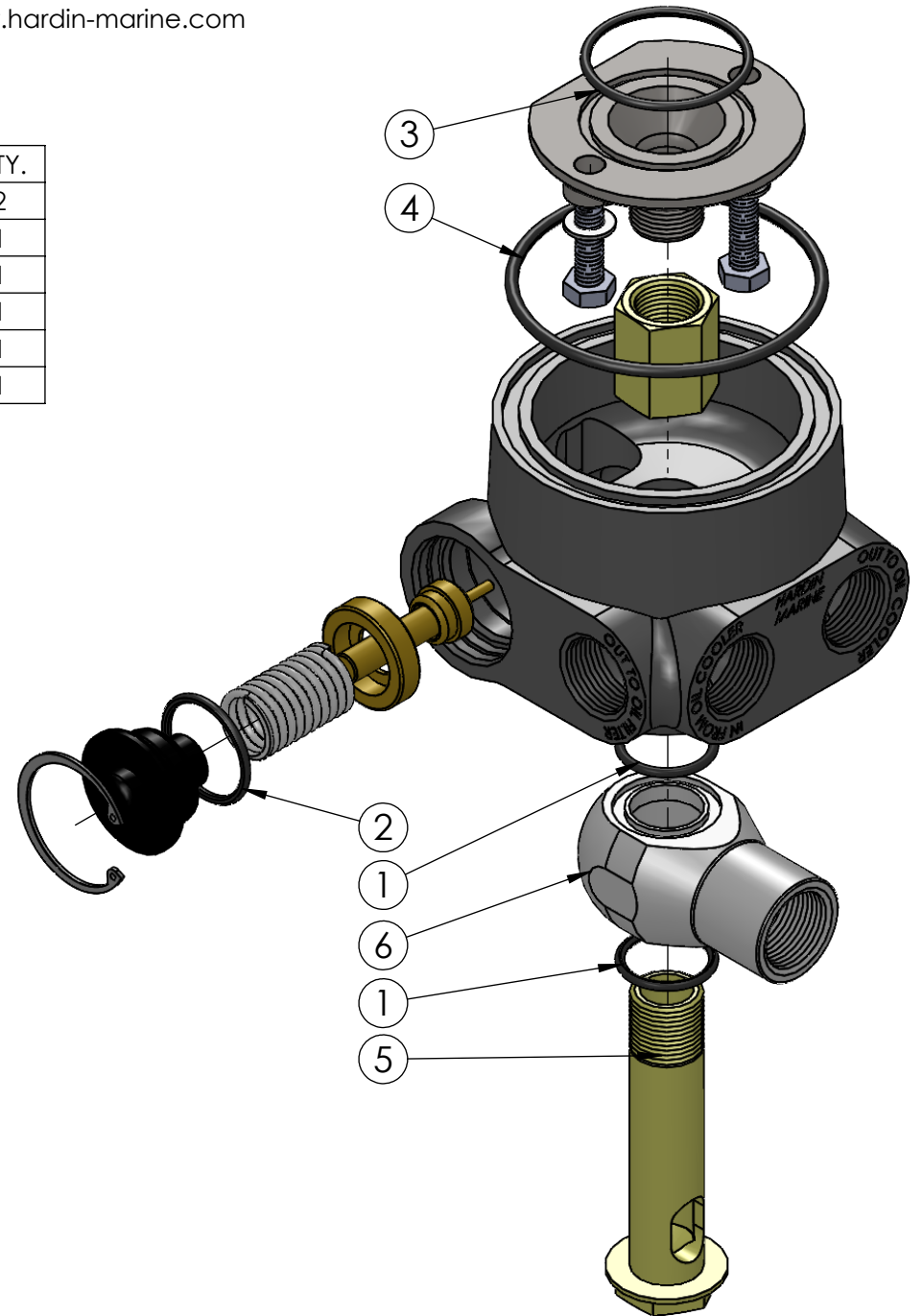
www.hardin-marine.com

TITLE:
THERMOSTATIC OIL ADAPTER - GEN 3 UPGRADE

ITEM NO.	PART NUMBER	DESCRIPTION	QTY.
1	625-1119	O-RING	2
2	625-1122	O-RING	1
3	625-1131	O-RING	1
4	625-1236	O-RING	1
5	625-7763	BOLT, THERMOSTATIC OIL ADAPTER	1
6	625-7766	INLET, THERMOSTATIC OIL ADAPTER	1

NOTE:

- 1) FITS BOTH 625-7703 AND 625-7704.
- 2) 08/2019 HARDIN MARINE CHANGED TO AN OIL ADAPTER THAT WAS SEALED WITH O-RINGS ALONG WITH UPGRADED BOLT.
- 3) 625-1131 IS ONLY USED WITH GENERATION 4 ENGINE.



THIS DRAWING IS CONFIDENTIAL AND IS SUPPLIED ON EXPRESS CONDITION THAT IT SHALL NOT BE LENT, COPIED OR DISCLOSED TO ANY OTHER PERSON OR USED FOR ANY OTHER PURPOSE WITHOUT WRITTEN CONSENT OF HARDIN MARINE INC.. BREACH OF THIS CONTRACT WILL HOLD AND IT'S PRINCIPALS LIABLE FOR LOSS AND DAMAGES.